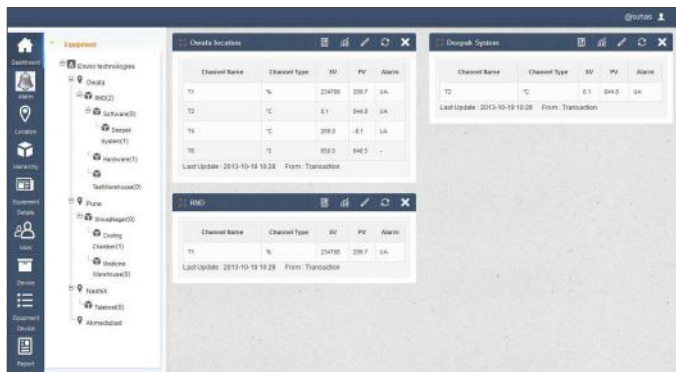


enviroUNISOFT

Web Based Environmental Monitoring Software



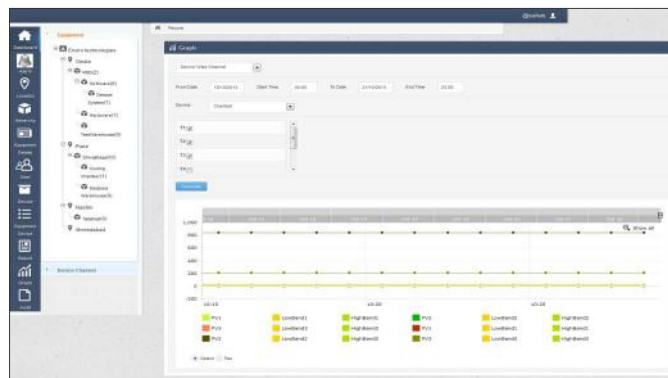
Alarm Acknowledgement

Acknowledged	Location Name	Equipment Name	Device Type	Channel Name	Channel No.	Channel Unit	Alarm Type	Active
<input type="checkbox"/>	Overall		TDSP	T8	8	°C	LA	YES
<input type="checkbox"/>	Overall		TDSP	T7	7	°C	UA	YES
<input type="checkbox"/>	Army Hare	EMD	TDSP	T1	1	°C	UA	YES
<input type="checkbox"/>	Regent Jadhav		TDSP	T3	3	°C	UA	YES
<input type="checkbox"/>	Sukha Hare	Desktop System	TDSP	T2	2	°C	UA	YES
<input type="checkbox"/>	Sukha Hare	EMD	TDSP	T4	4	°C	LA	YES
<input type="checkbox"/>	Sukha Hare		TDSP	T5	5	°C	UA	YES

Showing 1 to 7 of 7 entries

Search

Buttons: [Cancel] [Acknowledge] [Print] [Export]



Description:

Enviro's web based software is suitable for continuous monitoring and recording of enviroDPMS, enviroSCAN for various parameters like temperature, humidity etc. It provides tamper proof files and encrypted electronic records, equipped within software that provides a spectrum of functionality including downloading, displaying, analysing, reporting of data and 24*7 multistage alarm notification.

- User configurable company credentials to create new one or search or delete existing one
- Manage, create admins or super admins
- Astute audit trails which keeps recording certain actions (such as who logged in and when) and storing this information in the form of a log
- Parameter settings like SQL Connectivity, Device Service Details, Audit Trail Type
- Set alarm ranges for particular channel for respective device
- Location editing, User Information editing, Setting Hierarchy as per device and location
- Equipment Device Channel Setting by their Device Name, Channel Name, Channel No, Set Value, High Band and Low Band.
- Equipment wise channel Alarm report which generates the channel report as per Equipment
- Device wise channel Alarm report of required time period.
- Rich MIS like Audit Trail, MKT, Device Wise Channel, Equipment Wise Channel, Device Wise Channel Alarm, Equipment Wise Channel Alarm, Device Channel Info, Event